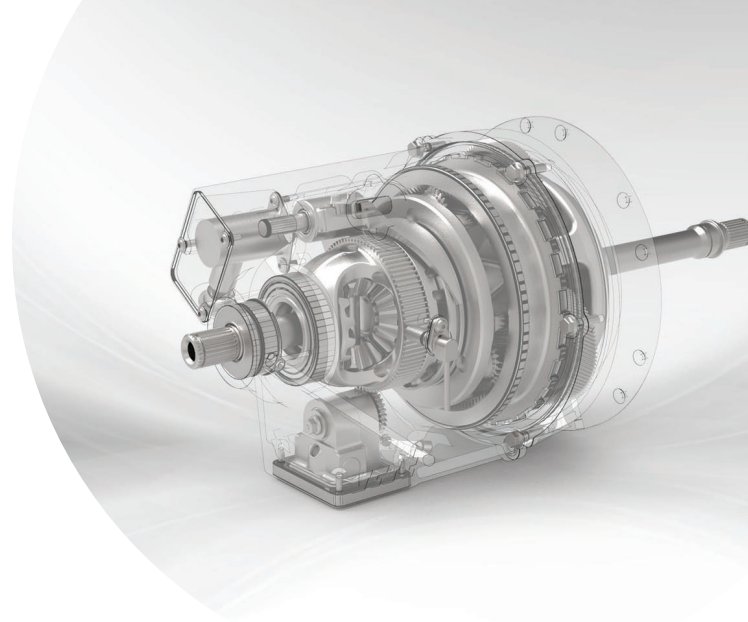
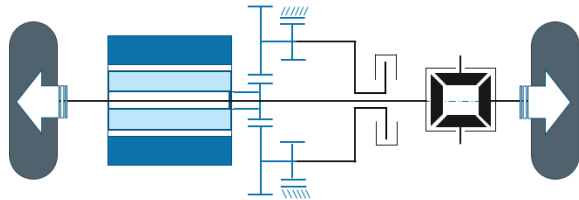


## 1-speed-AMT planetary with DISCONNECTION CLUTCH

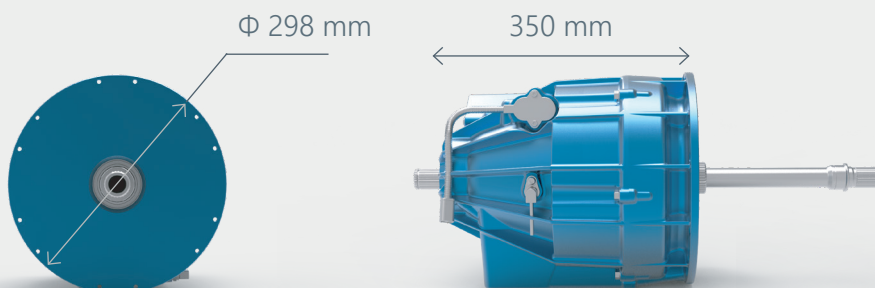


Number of speeds	1
Axis configuration	Coaxial
Transmission type	Planetary
Disconnection system	Electric dog clutch (located between planetary & differential unit)
E-machine configuration	Single (with shaft through)
Differential unit	Open diff 2 planets
Lubrication	Active lubrication (with bi-directional mechanical oil pump)
Potential vehicle layout	P4 transversal (gearbox axle coincident with propulsion shaft axle)

## FEATURES

## TECHNICAL SPECS

Gear ratio(s)	1 <sup>st</sup> ratio from 6:1 to 12:1 (11.8 : 1 represented) 2 <sup>nd</sup> ratio depends on the 1 <sup>st</sup> gear selection and gearbox diameter
Input torque range	[200-500] Nm (250 Nm represented)
Output torque range	[2000-4000] Nm (3000 Nm represented)
Shifting time	[0.2-0.4] sec
Weight (excl. oil)	36 kg (valid for 11.8 : 1 gear ratio)
Packaging	Length 350 mm - Diameter 298 mm (for 11.8 : 1 as 1 <sup>st</sup> ratio)



## PACKAGING

